



CBCI
COLORADO BLOOD
CANCER INSTITUTE

Understanding your Blood Tests for WMers

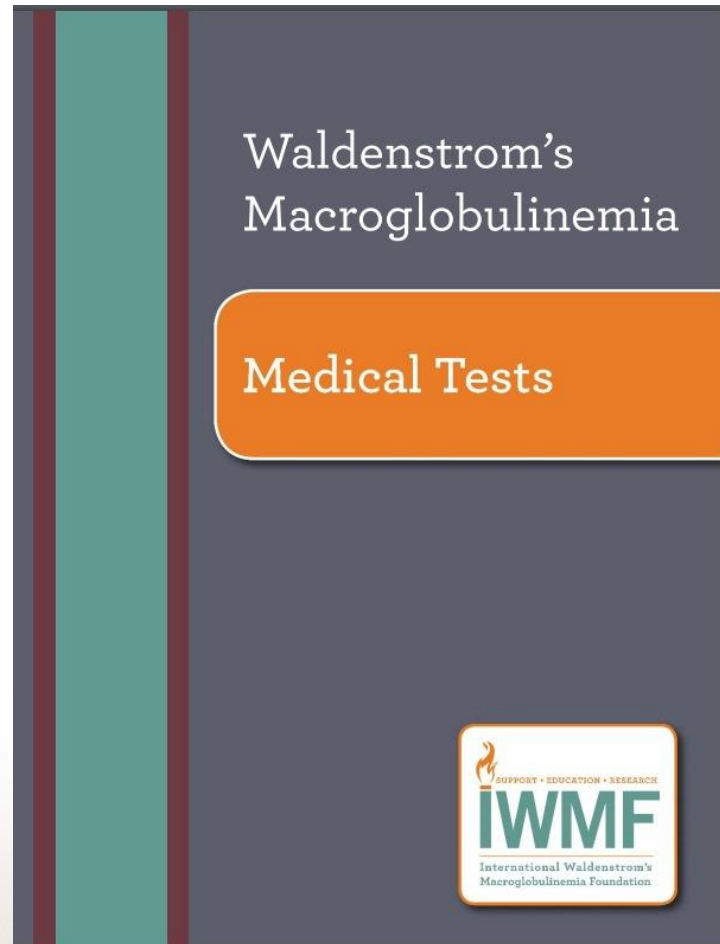
Jeffrey V. Matous MD

Colorado Blood Cancer Institute

IWMF Ed Forum May 2018



An Important Resource for Understanding Blood Tests in WM

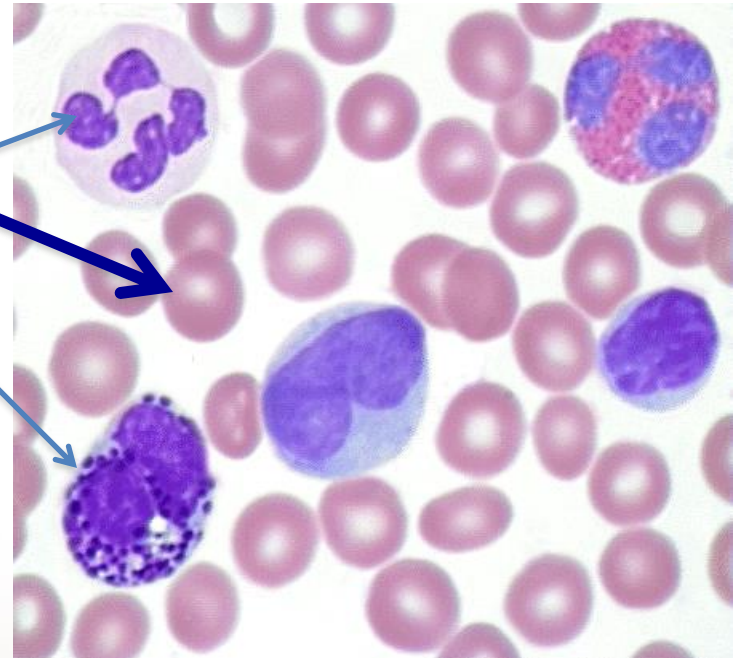


How do we use blood tests in WM patients?

- ◆ To make a diagnosis- WM often suspected when there is anemia (low red blood cell count) or a very high level of protein in the body (elevated total protein)
- ◆ To follow the results of any treatment
- ◆ To monitor for unusual complications

Complete blood count (CBC)

- ◆ Blood is made up of 3 kinds of cells suspended in a solution called plasma
- ◆ Red cells- carry oxygen
- ◆ White cells- fight infection
- ◆ Platelets- clot the blood
- ◆ Some special red cell tests help:
 - MCV (size of the cell)
 - Retic count (production rate of red cells)



A cbc result

Ordered Items

CBC/Diff Ambiguous Default; Comp. Metabolic Panel (14); Protein Electro.,S; Immunoglobulins A/G/M, Qn, Ser; Ambig Abbrev CMP14 Default; Venipuncture

TESTS	RESULT	FLAG	UNITS	REFERENCE INTERVAL	LAB
CBC/Diff Ambiguous Default					
WBC	2.3	Alert	x10E3/uL	3.4 - 10.8	01
RBC	3.67	Low	x10E6/uL	3.77 - 5.28	01
Hemoglobin	10.8	Low	g/dL	11.1 - 15.9	01
Hematocrit	33.0	Low	%	34.0 - 46.6	01
MCV	90		fL	79 - 97	01
MCH	29.4		pg	26.6 - 33.0	01
MCHC	32.7		g/dL	31.5 - 35.7	01
RDW	18.4	High	%	12.3 - 15.4	01
Platelets	172		x10E3/uL	150 - 379	01
Neutrophils	54		%		01
Lymphs	32		%		01
Monocytes	12		%		01
Eos	2		%		01
Basos	0		%		01
Neutrophils (Absolute)	1.2	Low	x10E3/uL	1.4 - 7.0	01
Lymphs (Absolute)	0.7		x10E3/uL	0.7 - 3.1	01
Monocytes (Absolute)	0.3		x10E3/uL	0.1 - 0.9	01
Eos (Absolute)	0.1		x10E3/uL	0.0 - 0.4	01
Baso (Absolute)	0.0		x10E3/uL	0.0 - 0.2	01
Immature Granulocytes	0		%		01
Immature Grans (Abs)	0.0		x10E3/uL	0.0 - 0.1	01



Chemistry profile

- ◆ Many bits of information available
- ◆ Kidney function (creatinine)
- ◆ Calcium level
- ◆ Liver blood tests
- ◆ Measurement of electrolytes such as potassium

- ◆ The basic chemistry test provides general information about WM
 - ◆ For more information, more specific tests must be ordered

A real chemistry result

Ordered Items

CMP14+3AC+Mg; CBC With Differential/Platelet; Protein Electro.,S; Immunofixation, Serum; Free K+L Lt Chains,Qn,S; Venipuncture

TESTS	RESULT	FLAG	UNITS	REFERENCE INTERVAL	LAB
CMP14+3AC+Mg					
Glucose, Serum	95		mg/dL	65 - 99	01
BUN	17		mg/dL	8 - 27	01
Creatinine, Serum	1.01	High	mg/dL	0.57 - 1.00	01
eGFR If NonAfrican Am	60		mL/min/1.73	>59	
eGFR If African Am	69		mL/min/1.73	>59	
BUN/Creatinine Ratio	17			12 - 28	
Sodium, Serum	135		mmol/L	134 - 144	01
Potassium, Serum	4.4		mmol/L	3.5 - 5.2	01
Chloride, Serum	96		mmol/L	96 - 106	01
Carbon Dioxide, Total	21		mmol/L	18 - 28	01
Calcium, Serum	9.8		mg/dL	8.7 - 10.3	01
Phosphorus, Serum	2.7		mg/dL	2.5 - 4.5	01
Magnesium, Serum	1.8		mg/dL	1.6 - 2.3	01
Protein, Total, Serum	9.0	High	g/dL	6.0 - 8.5	01
Albumin, Serum	4.2		g/dL	3.6 - 4.8	01
Globulin, Total	4.8	High	g/dL	1.5 - 4.5	
A/G Ratio	0.9	Low		1.2 - 2.2	
Bilirubin, Total	0.6		mg/dL	0.0 - 1.2	01
Alkaline Phosphatase, S	46		IU/L	39 - 117	01
LDH	171		IU/L	119 - 226	01
AST (SGOT)	22		IU/L	0 - 40	01
ALT (SGPT)	7		IU/L	0 - 32	01
GGT	11		IU/L	0 - 60	01



Tests important for WM

- ◆ Measurement of the IgM protein
 - IgM level
 - M spike
- ◆ Serum viscosity (how thick the blood is)
 - Have to order specifically
 - Higher level = thicker
 - Even if the test says the blood is too viscous, there may be NO symptoms!

WM labs- to track the disease

Ordered Items

Protein Electro.,S; Immunoglobulins A/G/M, Qn, Ser; Ca+PTH Intact; Free K+L Lt Chains,Qn,S; Viscosity, Serum; Vitamin D, 25-Hydroxy

TESTS	RESULT	FLAG	UNITS	REFERENCE INTERVAL	LAB
Protein Electro.,S					
Protein, Total	9.0	High	g/dL	6.0 - 8.5	01
Albumin	4.2		g/dL	2.9 - 4.4	02
Alpha-1-Globulin	0.3		g/dL	0.0 - 0.4	02
Alpha-2-Globulin	0.9		g/dL	0.4 - 1.0	02
Beta Globulin	1.2		g/dL	0.7 - 1.3	02
Gamma Globulin	2.4	High	g/dL	0.4 - 1.8	02
M-Spike	1.8	High	g/dL	Not Observed	02
Globulin, Total	4.8	High	g/dL	2.2 - 3.9	
A/G Ratio	0.9			0.7 - 1.7	
Please note:					02
Protein electrophoresis scan will follow via computer, mail, or courier delivery.					
PDF	.				02
Immunoglobulins A/G/M, Qn, Ser					
Immunoglobulin G, Qn, Serum	666	Low	mg/dL	700 - 1600	01
Immunoglobulin A, Qn, Serum	8	Low	mg/dL	90 - 386	01
Result confirmed on concentration.					
Immunoglobulin M, Qn, Serum	2849	High	mg/dL	20 - 172	01
Results confirmed on dilution.					

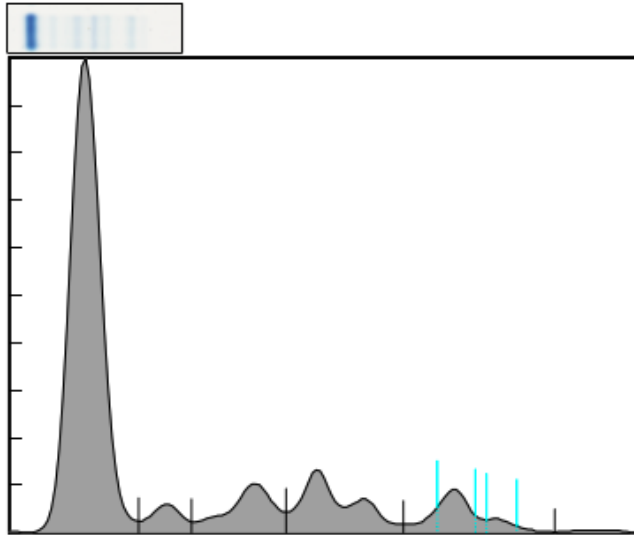


A real (pretty normal) SPEP

SPE 1192 Gel T81667 Sample 13 05/06/2018 17:26:18:12



QS #751328102



Fraction	%	g/dl	g/dl Range
Albumin	65.1	3.6	2.9 to 4.4
Alpha 1	3.8	0.2	0.0 to 0.4
Alpha 2	9.5	0.5	0.4 to 1.0
Beta	13.2	0.7	0.7 to 1.3
Gamma	8.4	0.5	0.4 to 1.8
Total Protein		5.5-	6.0 to 8.5

M-Spike	%	g/dl
Gamma (1)	4.4	0.2
Gamma (2)	1.1	0.1



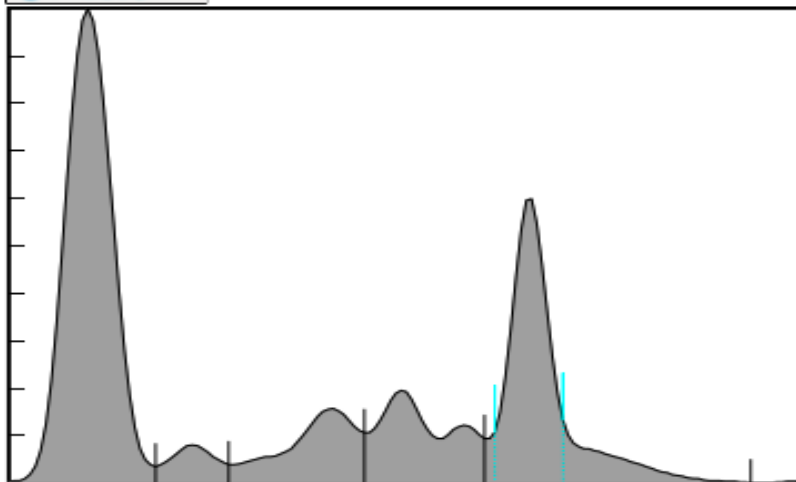
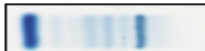
SPEP- abnormal with M spike

SPE 1192 Gel T81618 Sample 80 04/30/2018 10:40:53:79



11788132140

QS #751328102



Fraction	%	g/dl	g/dl Range
Albumin	46.2	4.2	2.9 to 4.4
Alpha 1	3.6	0.3	0.0 to 0.4
Alpha 2	10.5	0.9	0.4 to 1.0
Beta	13.0	1.2	0.7 to 1.3
Gamma	26.8	2.4+	0.4 to 1.8
Total Protein		9.0+	6.0 to 8.5

M-Spike	%	g/dl
Gamma	20.3	1.8



Other important tests

- ◆ Cryoglobulins
- ◆ Cold agglutinins
- ◆ some tests to look for a rare complication known as amyloid
- ◆ Special tests if there is too much bleeding (rare- a hemophiliac like condition known as von Willebrand's)
- ◆ Neuropathy tests- anti MAG or GM1